

# CT/MR Split Ring Applicator Sets

SETM1401, SETM0605, SETM0840



Innovative, patented design provides for enhanced clinical advantages and facilitates CT and MR based brachytherapy planning.



## Cervix, Endometrium

### Well-Accepted Design

The CT/MR Split Ring Applicator's patented design combines the benefits of several other intracavitary applicators with the ability to be configured as a closed ring or split into four different diameter distances in either symmetric or asymmetric arrangements. The connecting bracket enables simple connection and easy confirmation of diameter settings with three clearly visible identifiers associated with physical detents to lock in the chosen position.

### Various Configurations

The Split Ring Applicator Combination Set includes configurations for 30°, 45° and 60° 'ring' angles with a variety of intrauterine tube lengths and disposable or optional reusable build-up caps to fit a wide variety of anatomies.

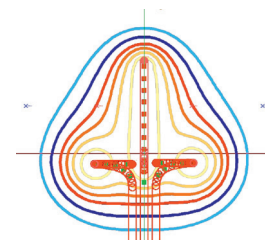
### MR Conditionality

All materials for this applicator, such as medical grade titanium, have been selected both to enable MR conditionality for enhanced planning and structural integrity, to give you the confidence for accurate placement and treatment.

### Features

- Split Ring symmetric diameters of 38 mm, 48 mm, 58 mm and 68 mm
- Reproducible geometry with diameter increments of as little as 5 mm based on single-side tube adjustment
- 3.2 mm intrauterine tubes with intrauterine sections of 20 mm, 40 mm, 60 mm and 80 mm for each of three angles (30°, 45°, 60°)
- Split Ring Applicators are CT compatible and MR conditional
- High quality – streak-free CT images for precise planning
- Lightweight yet sturdy titanium design
- Unique dose distribution flexibility and adjustability
- Individual insertion of right and left Split Ring tubes facilitates insertion in patients with a narrow introitus

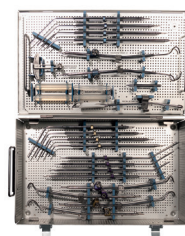
- Packing may be obviated with the use of the included rectal retractor
- Expected lifetime is 5 years
- Optional CT/MR intrauterine split sleeves
- Applicator available with connections for Eckert & Ziegler BEBIG afterloaders, Varian and Elekta/Nucletron transfer tubes\*



Isodose



Split Ring with disposable caps



Sterilization tray with Split Ring Applicator Set components



Eckert & Ziegler

Mick Radio-Nuclear  
Instruments, Inc.

An Eckert & Ziegler BEBIG Company

# CT/MR Split Ring Applicator Sets

## SETM1401 – CT/MR Split Ring Applicator Combo Set, for Eckert & Ziegler BEBIG afterloaders

Qty.	Item	Part number
1	CT/MR Split Ring, 30°, right tube	LCZ1401-30R
1	CT/MR Split Ring, 30°, left tube	LCZ1401-30L
1	CT/MR Split Ring Intrauterine Tube, 30°, L = 20 mm	LCZ1401-30-2
1	CT/MR Split Ring Intrauterine Tube, 30°, L = 40 mm	LCZ1401-30-4
1	CT/MR Split Ring Intrauterine Tube, 30°, L = 60 mm	LCZ1401-30-6
1	CT/MR Split Ring Intrauterine Tube, 30°, L = 80 mm	LCZ1401-30-8
1	CT/MR Split Ring, 45°, right tube	LCZ1401-45R
1	CT/MR Split Ring, 45°, left tube	LCZ1401-45L
1	CT/MR Split Ring Intrauterine Tube, 45°, L = 20 mm	LCZ1401-45-2
1	CT/MR Split Ring Intrauterine Tube, 45°, L = 40 mm	LCZ1401-45-4
1	CT/MR Split Ring Intrauterine Tube, 45°, L = 60 mm	LCZ1401-45-6
1	CT/MR Split Ring Intrauterine Tube, 45°, L = 80 mm	LCZ1401-45-8
1	CT/MR Split Ring, 60°, right tube	LCZ1401-60R
1	CT/MR Split Ring, 60°, left tube	LCZ1401-60L
1	CT/MR Split Ring Intrauterine Tube, 60°, L = 20 mm	LCZ1401-60-2
1	CT/MR Split Ring Intrauterine Tube, 60°, L = 40 mm	LCZ1401-60-4
1	CT/MR Split Ring Intrauterine Tube, 60°, L = 60 mm	LCZ1401-60-6
1	CT/MR Split Ring Intrauterine Tube, 60°, L = 80 mm	LCZ1401-60-8
2	Silicone Build-Up-Cap, R = 5 mm, (6 pcs), single use	LCZ0605-21-01
2	Silicone Build-Up-Cap, R = 7.5 mm, (6 pcs), single use	LCZ0605-22-02
1	CT/MR Universal Rectal Retractor	LCZ1209
1	Cervical Stop	LCZ0508-10
1	Support Wing	LCZ0605-20
1	Sterilization Tray	LCZ1107
1	Stainless Steel Allen Wrench	LCZ7311
1	Sealing Caps, (10 pcs)	LAZ17-03
1	Stainless Steel Ruler, L = 15 cm	LCZ7610

## SETM1401-30 – CT/MR Split Ring Applicator 30° Set, for Eckert & Ziegler BEBIG afterloaders

Qty.	Item	Part number
1	CT/MR Split Ring, 30°, right tube	LCZ1401-30R
1	CT/MR Split Ring, 30°, left tube	LCZ1401-30L
1	CT/MR Split Ring Intrauterine Tube, 30°, L = 20 mm	LCZ1401-30-2
1	CT/MR Split Ring Intrauterine Tube, 30°, L = 40 mm	LCZ1401-30-4
1	CT/MR Split Ring Intrauterine Tube, 30°, L = 60 mm	LCZ1401-30-6
1	CT/MR Split Ring Intrauterine Tube, 30°, L = 80 mm	LCZ1401-30-8
2	Silicone Build-Up-Cap, R = 5 mm, (6 pcs), single use	LCZ0605-21-01
2	Silicone Build-Up-Cap, R = 7.5 mm, (6 pcs), single use	LCZ0605-22
1	CT/MR Universal Rectal Retractor	LCZ1209
1	Cervical Stop	LCZ0508-10
1	Support Wing	LCZ0605-20
1	Sterilization Tray	LCZ1107
1	Stainless Steel Allen Wrench	LCZ7311
1	Sealing Caps, (10 pcs)	LAZ17-03
1	Stainless Steel Ruler, L = 15 cm	LCZ7610

## SETM1401-45 – CT/MR Split Ring Applicator 45° Set, for Eckert & Ziegler BEBIG afterloaders

Qty.	Item	Part number
1	CT/MR Split Ring, 45°, right tube	LCZ1401-45R
1	CT/MR Split Ring, 45°, left tube	LCZ1401-45L
1	CT/MR Split Ring Intrauterine Tube, 45°, L = 20 mm	LCZ1401-45-2
1	CT/MR Split Ring Intrauterine Tube, 45°, L = 40 mm	LCZ1401-45-4
1	CT/MR Split Ring Intrauterine Tube, 45°, L = 60 mm	LCZ1401-45-6
1	CT/MR Split Ring Intrauterine Tube, 45°, L = 80 mm	LCZ1401-45-8
2	Silicone Build-Up-Cap, R = 5 mm (6 pcs), single use	LCZ0605-21-01
2	Silicone Build-Up-Cap, R = 7.5 mm, (6 pcs), single use	LCZ0605-22
1	CT/MR Universal Rectal Retractor	LCZ1209
1	Cervical Stop	LCZ0508-10
1	Support Wing	LCZ0605-20
1	Sterilization Tray	LCZ1107
1	Stainless Steel Allen Wrench	LCZ7311
1	Sealing Caps, (10 pcs)	LAZ17-03
1	Stainless Steel Ruler, L = 15 cm	LCZ7610

# CT/MR Split Ring Applicator Sets

## SETM1401-60 – CT/MR Split Ring Applicator 60° Set, for Eckert & Ziegler BEBIG afterloaders

Qty.	Item	Part number
1	CT/MR Split Ring, 60°, right tube	LCZ1401-60R
1	CT/MR Split Ring, 60°, left tube	LCZ1401-60L
1	CT/MR Split Ring Intrauterine Tube, 60°, L = 20 mm	LCZ1401-60-2
1	CT/MR Split Ring Intrauterine Tube, 60°, L = 40 mm	LCZ1401-60-4
1	CT/MR Split Ring Intrauterine Tube, 60°, L = 60 mm	LCZ1401-60-6
1	CT/MR Split Ring Intrauterine Tube, 60°, L = 80 mm	LCZ1401-60-8
2	Silicone Build-Up-Cap, R = 5 mm, (6 pcs), single use	LCZ0605-21-01
2	Silicone Build-Up-Cap, R = 7.5 mm, (6 pcs), single use	LCZ0605-22
1	CT/MR Universal Rectal Retractor	LCZ1209
1	Cervical Stop	LCZ0508-10
1	Support Wing	LCZ0605-20
1	Sterilization Tray	LCZ1107
1	Stainless Steel Allen Wrench	LCZ7311
1	Sealing Caps, (10 pcs)	LAZ17-03
1	Stainless Steel Ruler, L = 15 cm	LCZ7610

## Required Items SETM1401, SETM1401-30, SETM1401-45, SETM1401-60

Qty.	Item	Part number
1	Transfer Tube, D = 3 mm, L = 1000 mm, Color code: green, Channel: 1	LAF1000-1
1	Transfer Tube, D = 3 mm, L = 1000 mm, Color code: yellow, Channel: 2	LAF1000-2
1	Transfer Tube, D = 3 mm, L = 1000 mm, Color code: blue, Channel: 3	LAF1000-3



Eckert & Ziegler BEBIG SagiNova® afterloader

## SETM0605 – CT/MR Split Ring Applicator Combo Set, for Varian transfer tubes\*

Qty.	Item	Part number
2	Silicone Build-Up-Cap, R = 5 mm, (6 pcs), single use	0605-21-01
2	Silicone Build-Up-Cap, R = 7,5 mm, (6 pcs), single use	0605-22
1	CT/MR Split Ring, 30°, left tube	0605-30-CSA-02
1	CT/MR Split Ring, 45°, left tube	0605-45-CSA-02
1	CT/MR Split Ring, 60°, left tube	0605-60-CSA-02
1	CT/MR Split Ring, 30°, right tube	0605-30-CSA-01
1	CT/MR Split Ring, 45°, right tube	0605-45-CSA-01
1	CT/MR Split Ring, 60°, right tube	0605-60-CSA-01
1	CT/MR Split Ring Intrauterine Tube, 30°, L = 20 mm	0605-30-TSA-02
1	CT/MR Split Ring Intrauterine Tube, 45°, L = 20 mm	0605-45-TSA-02
1	CT/MR Split Ring Intrauterine Tube, 60°, L = 20 mm	0605-60-TSA-02
1	CT/MR Split Ring Intrauterine Tube, 30°, L = 40 mm	0605-30-TSA-04
1	CT/MR Split Ring Intrauterine Tube, 45°, L = 40 mm	0605-45-TSA-04
1	CT/MR Split Ring Intrauterine Tube, 60°, L = 40 mm	0605-60-TSA-04
1	CT/MR Split Ring Intrauterine Tube, 30°, L = 60 mm	0605-30-TSA-06
1	CT/MR Split Ring Intrauterine Tube, 45°, L = 60 mm	0605-45-TSA-06
1	CT/MR Split Ring Intrauterine Tube, 60°, L = 60 mm	0605-60-TSA-06
1	CT/MR Split Ring Intrauterine Tube, 30°, L = 80 mm	0605-30-TSA-08
1	CT/MR Split Ring Intrauterine Tube, 45°, L = 80 mm	0605-45-TSA-08
1	CT/MR Split Ring Intrauterine Tube, 60°, L = 80 mm	0605-60-TSA-08
1	Cervical Stop	0508-10
1	Support Wing	0605-20
1	CT/MR Universal Rectal Retractor	1209
1	Stainless Steel Allen Wrench	7311
1	Stainless Steel Ruler, L = 15 cm	7610
1	Sterilization Tray	1107
1	Sterilization Caps, (10 pcs)	SRC093-12

# CT/MR Split Ring Applicator Sets

## SETM0840 – CT/MR Split Ring Applicator Combo Set, for Elekta/Nucletron transfer tubes\*

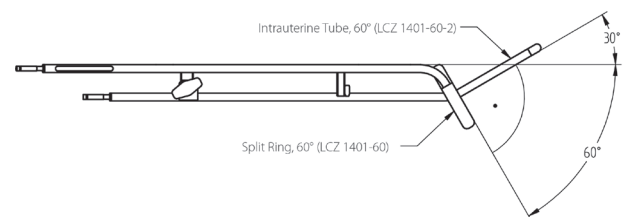
Qty.	Item	Part number
2	Silicone Build-Up-Cap, R = 5 mm, (6 pcs), single use	0605-21-01
2	Silicone Build-Up-Cap, R = 7,5 mm, (6 pcs), single use	0605-22
1	CT/MR Split Ring, 30°, left tube	0840-30-CSA-02
1	CT/MR Split Ring, 45°, left tube	0840-45-CSA-02
1	CT/MR Split Ring, 60°, left tube	0840-60-CSA-02
1	CT/MR Split Ring, 30°, right tube	0840-30-CSA-01
1	CT/MR Split Ring, 45°, right tube	0840-45-CSA-01
1	CT/MR Split Ring, 60°, right tube	0840-60-CSA-01
1	CT/MR Split Ring Intrauterine Tube, 30°, L = 20 mm	0840-30-TSA-02
1	CT/MR Split Ring Intrauterine Tube, 45°, L = 20 mm	0840-45-TSA-02
1	CT/MR Split Ring Intrauterine Tube, 60°, L = 20 mm	0840-60-TSA-02
1	CT/MR Split Ring Intrauterine Tube, 30°, L = 40 mm	0840-30-TSA-04
1	CT/MR Split Ring Intrauterine Tube, 45°, L = 40 mm	0840-45-TSA-04
1	CT/MR Split Ring Intrauterine Tube, 60°, L = 40 mm	0840-60-TSA-04
1	CT/MR Split Ring Intrauterine Tube, 30°, L = 60 mm	0840-30-TSA-06
1	CT/MR Split Ring Intrauterine Tube, 45°, L = 60 mm	0840-45-TSA-06
1	CT/MR Split Ring Intrauterine Tube, 60°, L = 60 mm	0840-60-TSA-06
1	CT/MR Split Ring Intrauterine Tube, 30°, L = 80 mm	0840-30-TSA-08
1	CT/MR Split Ring Intrauterine Tube, 45°, L = 80 mm	0840-45-TSA-08
1	CT/MR Split Ring Intrauterine Tube, 60°, L = 80 mm	0840-60-TSA-08
1	Cervical Stop	0508-10
1	Support Wing	0605-20
1	CT/MR Universal Rectal Retractor	1209
1	Stainless Steel Allen Wrench	7311
1	Stainless Steel Ruler, L = 15 cm	7610
1	Sterilization Tray	1107
1	Sterilization Caps, (10 pcs)	SRC093-12

## Optional Items

Qty.	Item	Part number
1	Build-Up Caps, 5.0 mm x 5.0 mm, reusable, (2 pcs)	LCZ1305-01-01
1	Build-Up Caps, 5 mm x 7.5 mm, reusable, (2 pcs)	LCZ1305-01-02
1	Build-Up Caps, 7.5 mm x 5.0 mm, reusable, (2 pcs)	LCZ1305-01-03
1	Build-Up Caps, 7.5 mm x 7.5 mm, reusable, (2 pcs)	LCZ1305-01-04
1	Build-Up Caps, 5 mm x 10 mm, reusable, (2 pcs)	LCZ1305-01-05
1	Build-Up Caps, 10 mm x 10 mm, reusable, (2 pcs)	LCZ1305-01-06
1	CT/MR Smit Sleeve Set, L = 20 mm - 100 mm (with 10 mm increments), (9 pcs)	LCZ0412-S

## For replacement orders:

Please order based on the 'ring angle':
CT/MR Split Ring, 30°, right & left tube with CT/MR Split Ring Intrauterine Tube, 30°
CT/MR Split Ring, 45°, right & left tube with CT/MR Split Ring Intrauterine Tube, 45°
CT/MR Split Ring, 60°, right & left tube with CT/MR Split Ring Intrauterine Tube, 60°



\* The applicator has been tested for mechanical compatibility with the indicated manufacturer's transfer tubes to confirm there are no internal source obstructions. Users are responsible for validating applicator compatibility, including treatment planning systems, with their afterloading equipment. Varian is a trade name/trademark of Varian Medical Systems, Inc. Elekta/Nucletron are trade names/trademarks of Elekta AB (publ). Mick and SagiNova are registered trademarks of Eckert & Ziegler BEBIG GmbH and its subsidiaries. The mentioned products are not available in all markets. Please contact your local Eckert & Ziegler BEBIG representative for more information.

### Manufacturer:

**Mick Radio-Nuclear Instruments, Inc.**  
An Eckert & Ziegler BEBIG Company  
521 Homestead Avenue  
Mount Vernon, NY 10550  
USA

Phone +1 914 667 3999  
Fax +1 914 665 8834  
sales@micknuclear.com

### Regional Sales, Marketing and Service:

Europe, Middle East, Africa,  
Latin America, Asia Pacific

**Eckert & Ziegler**  
**BEBIG GmbH**  
Robert-Rössle-Str. 10  
13125 Berlin  
Germany

Phone +49 30 94 10 84 130  
Fax +49 30 94 10 84 112  
info@bebig.com

North America

**Mick Radio-Nuclear Instruments, Inc.**  
An Eckert & Ziegler BEBIG Company  
521 Homestead Avenue  
Mount Vernon, NY 10550  
USA

Phone +1 914 667 3999  
Fax +1 914 665 8834  
sales@micknuclear.com

www.bebig.com  
www.micknuclear.com