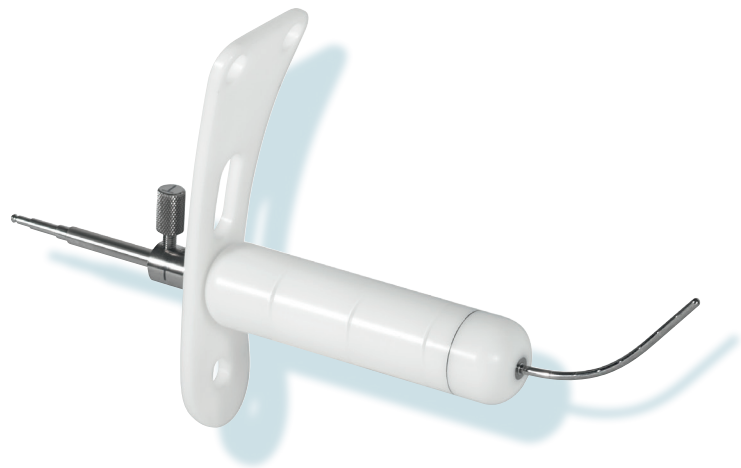


CT/MR Segmented Vaginal Applicator Set

SETM1406



Innovative technology and enhanced clinical advantages that facilitate CT and MR based brachytherapy planning.

Vagina, Cervix, Endometrium

Simplicity

The CT/MR Segmented Vaginal Applicator is designed to treat accurately and completely with vaginal and cervical coverage. The four-segment design in multiple widths allows for a range of both lengths as well as diameters to fit a variety of anatomies. The segments are easily fixed in place with a single, toolless lock knob.

Flexibility

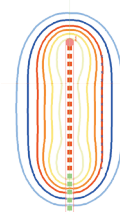
The CT/MR Segmented Vaginal Applicator is available in straight, 15°, 30°, 45° or stump configurations to effectively treat a variety of anatomies. 2.0 cm, 2.5 cm, 3.0 cm and 3.5 cm diameter build-up caps are available standard and can be assembled with 2, 3, or all 4 segments.

Reliability

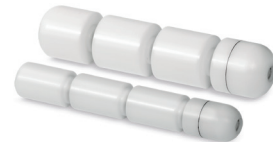
The titanium construction with laser welded connections allows for enhanced stability and torque resistance. The used Delrin®** build-up cap cylinder segments resist wear and tear from repeated use and cleaning as well as sterilization.

Features

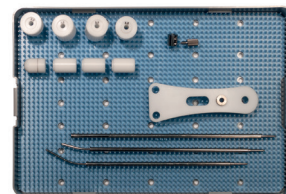
- Autoclavable components
- Up to 5 years of useful life
- Build-up caps in sets of 4 segments ranging from 2.0 to 3.5 cm in diameter
- Stump and intrauterine design with four angle options
- 3.2 mm intrauterine tubes
- Includes optional perineal retainer for applicator stabilization
- Optional CT/MR intrauterine smit sleeves
- Applicator available with connections for Eckert & Ziegler BEBIG afterloaders, Varian and Elekta/Nucletron transfer tubes**



Isodose



Segmented vaginal cylinder segments



Sterilization box with selected Segmented Vaginal Applicator Set components. Full SETM1406 is not represented in image.



Eckert & Ziegler

Mick Radio-Nuclear Instruments, Inc.

An Eckert & Ziegler BEBIG Company

CT/MR Segmented Vaginal Applicator Set

SETM1406, for Eckert & Ziegler BEBIG afterloaders

Qty.	Item	Part number
1	CT/MR Segmented Vaginal Applicator Intrauterine Tube, straight, L = 8 cm	LCZ1406-ST-8
1	CT/MR Stump Tube, straight	LCZ1406-STUMP
1	CT/MR Segmented Vaginal Applicator Intrauterine Tube, curved, 15°, L = 4 cm	LCZ1406-15-4
1	CT/MR Segmented Vaginal Applicator Intrauterine Tube, curved, 30°, L = 6 cm	LCZ1406-30-6
1	CT/MR Segmented Vaginal Applicator Intrauterine Tube, curved, 45°, L = 8 cm	LCZ1406-45-8
1	Spacers – L = 1 cm, 2 cm & 3 cm	LCZ1004-23
1	Distal Dome Segment, D = 2.0 cm	LCZ0804-02-2.0
1	Proximal Segment, D = 2.0 cm	LCZ0804-06-2.0
1	Middle Cylinder Segments, D = 2.0 cm, (2 pcs)	LCZ0804-05-2.0
1	Distal Dome Segment, D = 2.5 cm	LCZ0804-02-2.5
1	Proximal Segment, D = 2.5 cm	LCZ0804-06-2.5
1	Middle Cylinder Segments, D = 2.5 cm, (2 pcs)	LCZ0804-05-2.5
1	Distal Dome Segment, D = 3.0 cm	LCZ0804-02-3.0
1	Proximal Segment, D = 3.0 cm	LCZ0804-06-3.0
1	Middle Cylinder Segments, D = 3.0 cm, (2 pcs)	LCZ0804-05-3.0
1	Distal Dome Segment, D = 3.5 cm	LCZ0804-02-3.5
1	Proximal Segment, D = 3.5 cm	LCZ0804-06-3.5
1	Middle Cylinder Segments, D = 3.5 cm, (2 pcs)	LCZ0804-05-3.5
1	Collet Sleeve	LCZ1004-21
1	Collet Lock Knob	LCZ1004-22
1	Perineal Retainer	LCZ0804-20
1	Sealing Caps, (10 pcs)	LAZ17-03
1	Sterilization Box, 381 x 254 x 38 mm***	LCZ96-1522A



Eckert & Ziegler BEBIG SagiNova® afterloader

Required Items SETM1406

Qty.	Item	Part number
1	Transfer Tube, D = 3 mm, L = 1000 mm	LAF1000

CT/MR Segmented Vaginal Applicator Set

Set 1004, for Varian transfer tubes**

Qty.	Item	Part number
1	CT/MR Stump Tube, straight	1004-13-STUMP
1	CT/MR Segmented Vaginal Applicator Intrauterine Tube, curved, 15°, L = 4 cm	1004-13-15-4CM
1	CT/MR Segmented Vaginal Applicator Intrauterine Tube, curved, 30°, L = 6 cm	1004-13-30-6CM
1	CT/MR Segmented Vaginal Applicator Intrauterine Tube, curved, 45°, L = 8 cm	1004-13-45-8CM
1	CT/MR Segmented Vaginal Applicator Intrauterine Tube, straight, L = 8 cm	1004-13-ST-8CM
1	Spacers – L = 1 cm, 2 cm & 3 cm	1004-23
1	Distal Dome Segment, D = 2.0 cm	0804-02-2.0
1	Proximal Segment, D = 2.0 cm	0804-06-2.0
1	Middle Cylinder Segments, D = 2.0 cm, (2 pcs)	0804-05-2.0
1	Distal Dome Segment, D = 2.5 cm	0804-02-2.5
1	Proximal Segment, D = 2.5 cm	0804-06-2.5
1	Middle Cylinder Segments, dD = 2.5 cm, (2 pcs)	0804-05-2.5
1	Distal Dome Segment, D = 3.0 cm	0804-02-3.0
1	Proximal Segment, D = 3.0 cm	0804-06-3.0
1	Middle Cylinder Segments, D = 3.0 cm, (2 pcs)	0804-05-3.0
1	Distal Dome Segment, D = 3.5 cm	0804-02-3.5
1	Proximal Segment, D = 3.5 cm	0804-06-3.5
1	Middle Cylinder Segments, D = 3.5 cm, (2 pcs)	0804-05-3.5
1	Collet Sleeve	1004-21
1	Collet Lock Knob	1004-22
1	Perineal Retainer	0804-20
1	Sterilization Caps, (10 pcs)	SRC093-12
1	Sterilization Box, 381 x 254 x 38 mm***	96-1522A

Set 0804, for Elekta/Nucletron transfer tubes**

Qty.	Item	Part number
1	CT/MR Stump Tube, straight	0804-13-STUMP
1	CT/MR Segmented Vaginal Applicator Intrauterine Tube, curved, 15°, L = 4 cm	0804-13-15-4CM
1	CT/MR Segmented Vaginal Applicator Intrauterine Tube, curved, 30°, L = 6 cm	0804-13-30-6CM
1	CT/MR Segmented Vaginal Applicator Intrauterine Tube, curved, 45°, L = 8 cm	0804-13-45-8CM
1	CT/MR Segmented Vaginal Applicator Intrauterine Tube, straight, L = 8 cm	0804-13-ST-8CM
1	Spacers – L = 1 cm, 2 cm & 3 cm	1004-23
1	Distal Dome Segment, D = 2.0 cm	0804-02-2.0
1	Proximal Segment, D = 2.0 cm	0804-06-2.0
1	Middle Cylinder Segments, D = 2.0 cm, (2 pcs)	0804-05-2.0
1	Distal Dome Segment, D = 2.5 cm	0804-02-2.5
1	Proximal Segment, D = 2.5 cm	0804-06-2.5
1	Middle Cylinder Segments, D = 2.5 cm, (2 pcs)	0804-05-2.5
1	Distal Dome Segment, D = 3.0 cm	0804-02-3.0
1	Proximal Segment, D = 3.0 cm	0804-06-3.0
1	Middle Cylinder Segments, D = 3.0 cm, (2 pcs)	0804-05-3.0
1	Distal Dome Segment, D = 3.5 cm	0804-02-3.5
1	Proximal Segment, D = 3.5 cm	0804-06-3.5
1	Middle Cylinder Segments, D = 3.5 cm, (2 pcs)	0804-05-3.5
1	Collet Sleeve	1004-21
1	Collet Lock Knob	1004-22
1	Perineal Retainer	0804-20
1	Sterilization Caps, (10 pcs)	SRC093-12
1	Sterilization Box, 381 x 254 x 38 mm***	96-1522A

Optional Items

Qty.	Item	Part number
1	CT/MR Smit Sleeve Set (Titanium Ring), L = 20 mm - 100 mm (with 10 mm increments), (9 pcs)	LCZ0412-S

* Delrin® is a registered trademark of E. I. du Pont de Nemours and Company.

** The applicator has been tested for mechanical compatibility with the indicated manufacturer's transfer tubes to confirm there are no internal source obstructions. Users are responsible for validating applicator compatibility, including treatment planning systems, with their afterloading equipment. Varian is a trade name/trademark of Varian Medical Systems, Inc. Elekta/Nucletron are trade names/trademarks of Elekta AB (publ).

*** Manufactured by PST Plastic Sterilizing Trays Corporation

Mick is a trade name of Eckert & Ziegler BEBIG SA and its subsidiaries. SagiNova is a registered trademark of Eckert & Ziegler BEBIG SA and its subsidiaries. The mentioned products are not available in all markets. Please contact your local Eckert & Ziegler BEBIG representative for more information.

Corporate Head Office:

Manufacturer:

Regional Sales, Marketing and Service:

**Eckert & Ziegler
BEBIG SA**
Rue Jules Bordet
Zone Industrielle C
7180 Seneffe
Belgium

Phone +32 64 520 811
Fax +32 64 520 801
info@bebig.com

**Mick Radio-Nuclear Instruments, Inc.
An Eckert & Ziegler BEBIG Company**
521 Homestead Avenue
Mount Vernon, NY 10550
USA

Phone +1 914 667 3999
Fax +1 914 665 8834
sales@micknuclear.com

**Europe, Middle East, Africa,
Latin America, Asia Pacific**

**Eckert & Ziegler
BEBIG SA**
Rue Jules Bordet
Zone Industrielle C
7180 Seneffe
Belgium

Phone +32 64 520 811
Fax +32 64 520 801
info@bebig.com

North America

**Mick Radio-Nuclear Instruments, Inc.
An Eckert & Ziegler BEBIG Company**
521 Homestead Avenue
Mount Vernon, NY 10550
USA

Phone +1 914 667 3999
Fax +1 914 665 8834
sales@micknuclear.com

www.bebig.com
www.micknuclear.com