

# CT/MR Miami Applicator Sets

SETM1410, SETM0904, SETM0920



Innovative technology and enhanced clinical advantages that facilitate CT and MR based brachytherapy planning.

## Vagina, Cervix, Endometrium

### Simplicity

The CT/MR Miami Applicator is designed for simplicity, even in the most advanced settings. The CT/MR Miami Applicator 7-channel design enables either complete or targeted treatment throughout the vagina and cervix. It allows for accurate and reliable treatments in nearly any anatomy with a range of intrauterine angle and stump configurations, various sized build-up caps and optional dome end build-up caps. The single step applicator placement requires minimal intracavitary assembly. The detachable body, cylinder and docking unit design enables quick setup and simplify cleaning. Also the cervical stop enhances repeatability and reduces potential for iatrogenic injury.

### Flexibility

The CT/MR Miami Applicator Set includes standard 30°, 0° and stump configurations to effectively treat a variety of anatomies. The 3.0 cm, 3.5 cm and 4.0 cm build-up cap cylinders and optional domes allow for enhanced source spacing, and the 7-channel design enables more precise dose distribution around circumference of the vagina.



*Domed build-up caps*



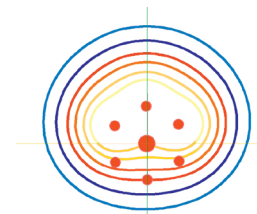
*Build-up caps*

### Reliability

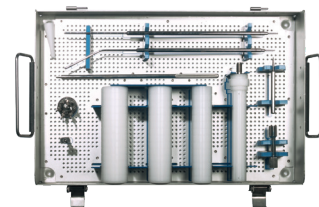
The titanium construction with laser welded connections allows for enhanced stability and torque resistance. Keyed connections ensure consistent alignment of channels and intrauterine tube.

### Features

- Autoclavable components
- Expected lifetime is 5 years
- Flat and optional domed cylinders for variety of anatomies
- 3.2 mm intrauterine tubes
- Enhanced control of vaginal and cervical dose with 6 circumferential tubes plus a central intrauterine tube
- Optional CT/MR intrauterine smit sleeves
- Applicator available with connections for Eckert & Ziegler BEBIG afterloaders, Varian and Elekta/Nucletron transfer tubes\*



*Isodose*



*Sterilization tray with Miami Applicator Set components*



**Eckert & Ziegler**

**Mick Radio-Nuclear  
Instruments, Inc.**

*An Eckert & Ziegler BEBIG Company*

# CT/MR Miami Applicator Sets

## SETM1410, for Eckert & Ziegler BEBIG afterloaders

| Qty. | Item   | Part number   |
|------|--|---------------|
| 1    | CT/MR Miami Applicator Intrauterine Tube, 30°      | LCZ1410-IU-30 |
| 1    | CT/MR Miami Applicator Intrauterine Tube, straight | LCZ1410-IU-ST |
| 1    | Docking Unit Assembly                              | LCZ1410-36    |
| 1    | CT/MR Miami Applicator Body                        | LCZ0904-01    |
| 1    | Build-Up Cap, D = 30 mm                            | LCZ0904-02-30 |
| 1    | Build-Up Cap, D = 35 mm                            | LCZ0904-02-35 |
| 1    | Build-Up Cap, D = 40 mm                            | LCZ0904-02-40 |
| 1    | Tandem Lock Nut                                    | LCZ0904-10    |
| 1    | Cervical Stop                                      | LCZ0508-10    |
| 1    | Stainless Steel Allen Wrench                       | LCZ7311       |
| 1    | Stump Plug   | LCZ0104-30    |
| 1    | Stump Plug Insertion Tool                          | LCZ0104-29    |
| 1    | Sealing Caps, (10 pcs each)                        | LAZ17-03      |
| 1    | Sterilization Tray                                 | LCZSS00873000 |

### Required Items SETM1410

| Qty. | Item                                 | Part number |
|------|--------------------------------------|-------------|
| 7    | Transfer Tube, D = 3 mm, L = 1000 mm | LAF1000     |

### Optional Items

| Qty. | Item   | Part number   |
|------|--|---------------|
| 1    | Domed Build-Up Cap, D = 25 mm  | LCZ0904-40-25 |
| 1    | Domed Build-Up Cap, D = 30 mm  | LCZ0904-40-30 |
| 1    | Domed Build-Up Cap, D = 35 mm  | LCZ0904-40-35 |
| 1    | Domed Build-Up Cap, D = 40 mm  | LCZ0904-40-40 |
| 1    | Build-Up Cap, D = 25 mm  | LCZ0904-02-25 |
| 1    | CT/MR Smit Sleeve Set, L = 20 mm - 100 mm (with 10 mm increments), (9 pcs) | LCZ0412-5     |



Eckert & Ziegler BEBIG SagiNova® afterloader

## SETM0904, for Varian transfer tubes\*

| Qty. | Item   | Part number |
|------|--|-------------|
| 1    | CT/MR Miami Applicator Intrauterine Tube, 30°      | 0904-14-30  |
| 1    | CT/MR Miami Applicator Intrauterine Tube, straight | 0904-14-ST  |
| 1    | Docking Unit Assembly                              | 0904-36     |
| 1    | CT/MR Miami Applicator Body                        | 0904-01     |
| 1    | Build-Up Cap, D = 30 mm                            | 0904-02-30  |
| 1    | Build-Up Cap, D = 35 mm                            | 0904-02-35  |
| 1    | Build-Up Cap, D = 40 mm                            | 0904-02-40  |
| 1    | Tandem Lock Nut                                    | 0904-10     |
| 1    | Cervical Stop                                      | 0508-10     |
| 1    | Stainless Steel Allen Wrench                       | 7311        |
| 1    | Stump Plug   | 0104-30     |
| 1    | Stump Plug Insertion Tool                          | 0104-29     |
| 1    | Sterilization Caps, (10 pcs)                       | SRC093-12   |
| 1    | Sterilization Tray                                 | SS00873000  |

## SETM0920, for Elekta/Nucletron transfer tubes\*

| Qty. | Item   | Part number |
|------|--|-------------|
| 1    | CT/MR Miami Applicator Intrauterine Tube, 30°      | 0920-IU-30  |
| 1    | CT/MR Miami Applicator Intrauterine Tube, straight | 0920-IU-ST  |
| 1    | Docking Unit Assembly                              | 0920-36     |
| 1    | CT/MR Miami Applicator Body                        | 0920-01     |
| 1    | Build-Up Cap, D = 30 mm                            | 0904-02-30  |
| 1    | Build-Up Cap, D = 35 mm                            | 0904-02-35  |
| 1    | Build-Up Cap, D = 40 mm                            | 0904-02-40  |
| 1    | Cervical Stop                                      | 0508-10     |
| 1    | Stainless Steel Allen Wrench                       | 7311        |
| 1    | Intrauterine Tube Set Screw Adjustment             | WRH-003     |
| 1    | Stump Plug   | 0104-30     |
| 1    | Stump Plug Insertion Tool                          | 0104-29     |
| 1    | Sterilization Caps, (10 pcs)                       | SRC093-12   |
| 1    | Sterilization Tray                                 | SS008873000 |

\* The applicator has been tested for mechanical compatibility with the indicated manufacturer's transfer tubes to confirm there are no internal source obstructions. Users are responsible for validating applicator compatibility, including treatment planning systems, with their afterloading equipment. Varian is a trade name/ trademark of Varian Medical Systems, Inc. Elekta/Nucletron are trade names/trademarks of Elekta AB (publ). Mick and SagiNova are registered trademarks of Eckert & Ziegler BEBIG GmbH and its subsidiaries. The mentioned products are not available in all markets. Please contact your local Eckert & Ziegler BEBIG representative for more information.

#### Manufacturer:

**Mick Radio-Nuclear Instruments, Inc.**  
An Eckert & Ziegler BEBIG Company  
521 Homestead Avenue  
Mount Vernon, NY 10550  
USA

Phone +1 914 667 3999  
Fax +1 914 665 8834  
sales@micknuclear.com

#### Regional Sales, Marketing and Service:

Europe, Middle East, Africa,  
Latin America, Asia Pacific

**Eckert & Ziegler  
BEBIG GmbH**  
Robert-Rössle-Str. 10  
13125 Berlin  
Germany

Phone +49 30 94 10 84 130  
Fax +49 30 94 10 84 112  
info@bebig.com

North America

**Mick Radio-Nuclear Instruments, Inc.**  
An Eckert & Ziegler BEBIG Company  
521 Homestead Avenue  
Mount Vernon, NY 10550  
USA

Phone +1 914 667 3999  
Fax +1 914 665 8834  
sales@micknuclear.com

www.bebig.com  
www.micknuclear.com