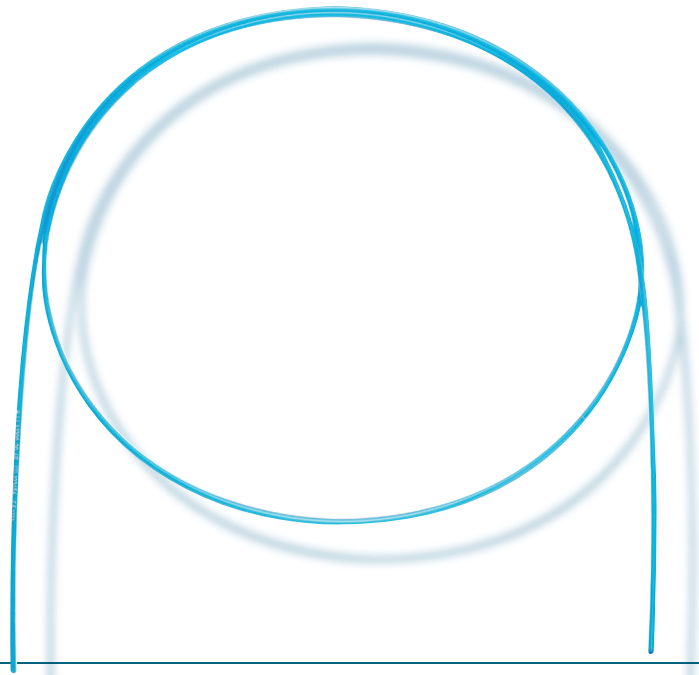


Bronchus Intraluminal Set

SET0020



Basic tool for intraluminal brachytherapy with safe and easy connection to the afterloader.



Bronchus

Endobronchial Brachytherapy

The Bronchus Intraluminal Set has been designed for HDR intraluminal brachytherapy treatments, especially for endobronchial brachytherapy.

Easy Insertion

The set contains universal applicators with a diameter of 2 mm and a length of 1200 mm, connectors for safe and easy connection to the afterloader, and X-ray markers for identification of the applicators on X-ray images. The small diameter allows easy insertion of the applicator into a smaller lumen.

Sterile Delivery

The applicators are provided sterile, allowing immediate clinical use. The applicators are for single use only.

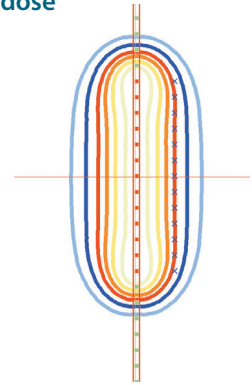
Features

- Small diameter allows easy insertion into a small lumen
- Universal Applicators are delivered sterile
- X-ray markers for easy identification during treatment planning

Set Content SET0020

Quantity	Item	Part number
2	Connector for Universal Applicator, D = 2.0 mm (EasyClick 6F)*,*****	LLS50-6F
15	Universal Applicator, marked, D = 2 mm, L = 1200 mm (sterile)*	LLA1200-20
1	X-Ray Marker with Ruler 10:10, D = 1.2 mm, L = 1230 mm	LLH02-21
1	X-Ray Marker with Ruler 5:5, D = 1.2 mm, L = 1230 mm	LLH02-22
*Alternative:	Universal Applicator, D = 1.7mm, L 1200 mm (sterile)	LLA1200-17
	Connector for Universal Applicator, D = 1.7 mm (EasyClick 5F)	LLS50-5F
***** Not MR safe nor conditional – not to be used during MR scan		

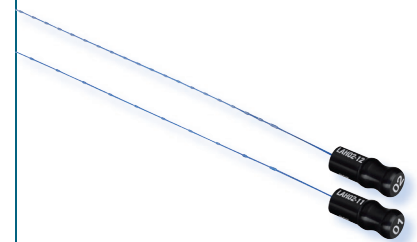
Isodose



Connector for Universal Applicator



X-Ray Marker with Ruler



Eckert & Ziegler
Contributing to saving lives