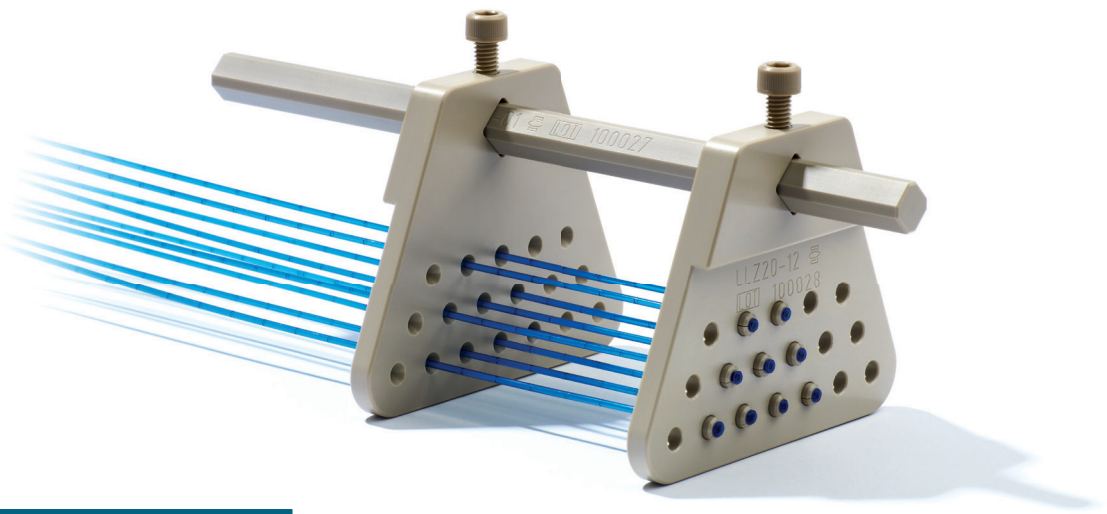


# Breast Bridge with Fixation Buttons

SET0081



CT/MR compatible tool with enhanced usability for treatment of breast cancer with plastic needles or flexible catheters.

## Breast

### Removable Fixation Buttons

Each pair of breast templates includes a template with fixation buttons. The buttons allow removal of the template, once the flexible catheters single leader have been implanted. All templates can be used together with Eckert & Ziegler BEBIG flexible catheters single leader or plastic needles (all 16G).

### Adapting to Patient Anatomy

The set contains a guide pillar for the Breast Bridge and two pairs of breast templates in the two most commonly ordered sizes. To facilitate adaption to the patient's anatomy, two additional sizes of templates are also available. The template's holes are positioned in equilateral triangles (Paris System) with side lengths of 12 mm, 16 mm (set content), 8 mm and 20 mm (optional). All sizes of templates have the same number of holes arranged in three rows with seven, six, and five holes. The separation between the templates is continuously variable between 0 and 180 mm, in order to fit to all patient anatomies.

### Boost or Monotherapy

The Breast Bridge with Fixation Buttons has been designed for HDR interstitial breast brachytherapy treatments, either for boost treatments or for monotherapy.

## Features

- CT compatible and MR conditional
- Suitable for interstitial breast implants
- Thanks to the special design, all flexible implants can be inserted before the template is removed
- Build-in fixation buttons
- Breast templates available in four different sizes
- Compatible with 16G plastic needles and 16G flexible catheters single leader
- All parts can be steam sterilized

## Set Content SET0081

Quantity	Item	Part number
1	Breast Template, Triple Plane, 12 mm (Paris), with Fixation Buttons	LLZ20-12
1	Breast Template, Triple Plane, 16 mm (Paris), with Fixation Buttons	LLZ20-16
1	Guide Pillar for Breast Template	LLZ20-01

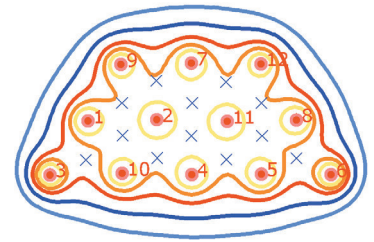
## Required Items

Quantity	Item	Part number
20	Flexible Catheter Single Leader, D= 1.65 mm, L= 300 mm*	LLA300-F
20	Hollow Needle for Flexible Catheter, 18G, L= 200 mm*	LLA200-H
1	Cutter for Flexible Catheters <sup>7</sup>	LAH06-01
20	Easy Click Transfer Tube, D= 3 mm, L=1 000 mm	LAG1000
2	Fixation Balls, d= 1.6 mm, D= 7 mm, (10 pcs)	LLZ06-05
1	Opening Forceps for Fixation Balls*** <sup>2</sup>	LAH05-02
* Alternative:	Plastic Needle, sterile, D= 1.65 mm, L= 200 mm	LLA200-KB
	Obturator for Plastic and Steel Needles, L= 200 mm, (5 pcs)	LLH01-200
*** Opening Forceps are needed to position the fixation balls		

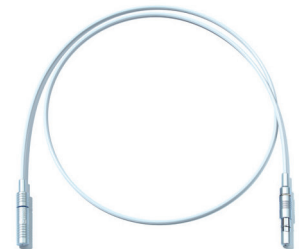
## Optional Items

Quantity	Item	Part number
1	Sterilization Box, 381 x 254 x 38 mm <sup>1</sup>	LLZ05-01
1	Breast Template, Triple Plane, 8 mm (Paris), with Fixation Buttons	LLZ20-08
1	Breast Template, Triple Plane, 20 mm (Paris), with Fixation Buttons	LLZ20-20
1	Set of X-Ray Markers, L= 325 mm, Code= 01-02	SET0030
1	Set of X-Ray Markers, L= 325 mm, Code= 01-20	SET0034
1	Channel Coding for Needles and Catheters (Set for Channel 1-20)	LLZ03-21
1	Channel Coding for Transfer Tubes (Set for Channel 1-20)	LLZ04-01

## Isodose



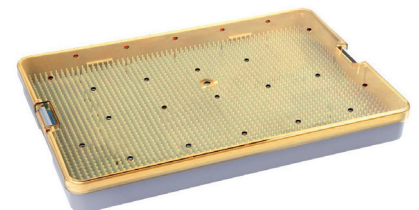
## Easy Click Transfer Tube



## Opening Forceps for Fixation Balls



## Sterilization Box



<sup>1</sup> Manufactured by PST Plastic Sterilizing Trays Corporation

<sup>2</sup> Manufactured by Otto Leibinger GmbH

<sup>7</sup> Manufactured by Pressmaster GmbH

